

PERFORMANCE

Processor

Intel® Core™ i5-1235U, 10C (2P + 8E) / 12T, P-core 1.3 / 4.4GHz, E-core 0.9 / 3.3GHz, 12MB

Graphics

NVIDIA® GeForce MX550 2GB GDDR6

Chipset

Intel SoC Platform

Memory

8GB Soldered DDR4-3200

Memory Slots

One memory soldered to systemboard, one DDR4 SO-DIMM slot, dual-channel capable

Max Memory^[1]

Up to 40GB (8GB soldered + 32GB SO-DIMM) DDR4-3200

Storage

512GB SSD M.2 2242 PCIe® 4.0x4 NVMe® Opal 2.0

Storage Support^[2]

Up to two drives, 2x M.2 SSD

- M.2 2242 SSD up to 1TB

Storage Slot

Two M.2 slots

- One M.2 2242 PCIe 3.0 x4 slot
- One M.2 2242 PCIe 4.0 x4 slot

Card Reader

No card reader

Optical

None

Audio Chip

High Definition (HD) Audio, Realtek® ALC3287 codec

Speakers

Stereo speakers, 2W x2, Dolby® Audio™, audio by HARMAN

Camera

FHD 1080p with Privacy Shutter

Microphone

2x, Array

Battery

Integrated 57Wh

Power Adapter

65W USB-C® (3-pin)

DESIGN

Display

15.6" FHD (1920x1080) IPS 300nits Anti-glare, 45% NTSC

Touchscreen

None

Keyboard

Non-backlit, French

Case Color

Black

Case Material

Aluminium (Top), PC-ABS (Bottom)

Dimensions (WxDxH)^[3]

365 x 240 x 18.9 mm (14.37 x 9.45 x 0.74 inches)

Weight^[4]

Starting at 1.7 kg (3.75 lbs)

SOFTWARE

Operating System

None

Bundled Software

None

CONNECTIVITY

Ethernet

100/1000M (RJ-45)

WLAN + Bluetooth^[5]^[6]

Wi-Fi® 6E, 11ax 2x2 + BT5.1

WWAN

None

SIM Card

None

NFC

None

Standard Ports

- 1x Ethernet (RJ-45)
- 1x HDMI® 2.1, up to 4K/60Hz
- 1x Headphone / microphone combo jack (3.5mm)
- 1x Thunderbolt™ 4 / USB4® 40Gbps (support data transfer, Power Delivery 3.0 and DisplayPort™ 1.4)
- 1x USB 2.0
- 1x USB 3.2 Gen 1 (Always On)

Docking

Various docking solutions supported via USB-C.

For more compatible docking solutions, please visit [Docking](#)

[for ThinkPad® E15 Gen 4 \(Intel\)](#)

Monitor Cable

None

SECURITY & PRIVACY

Smart Card Reader

None

Security Chip

Firmware TPM 2.0 Enabled

Fingerprint Reader

Touch Style, Integrated in Power Button

Physical Locks

Kensington® Security Slot™, 3 x 7 mm

Other Security

Camera privacy shutter

MANAGEABILITY

System Management

Non-vPro®

SERVICE

Base Warranty

1-year, Courier or Carry-in

Included Upgrade

2Y Depot from 1Y Depot MEA DOS (CPN)

ACCESSORIES

Bundled Accessories

Lenovo® 15.6" Laptop Casual Toploader, Grey

CERTIFICATIONS

Green Certifications

- ErP Lot 3
- RoHS compliant
- TCO Certified 9.0

Other Certifications

TÜV Rheinland® Low Blue Light (Software Solution)

Mil-Spec Test

MIL-STD-810H military test passed

MODEL

TopSeller : Yes **Announce Date** : 2022-05-17

EAN / UPC / JAN : 0196800735881 **End of Support** : N/A

Note:

^[1] The max memory is based on the test results with current Lenovo memory offerings.

^[2] The storage capacity supported is based on the test results with current Lenovo storage offerings.

^[3] The system dimensions may vary depending on configurations.

^[4] The system weight is approximate and based on results in.....

• Lenovo reserves the right to change specifications without notice.

To see more note information, please link to

<https://psref.lenovo.com/Detail/2008?M=21E600A3FE>

Premier Support - A direct 24x7x365 line to our most elite technicians.



Advanced technical support, 24x7x365, in more than 100 markets



Technical Account Managers for proactive relationship and escalation management



Comprehensive hardware & OEM software support



Priority on service delivery and repair parts



Single point of contact for simplified end-to-end case management



Lenovo Service Connect Portal for customized reporting and product support

Accidental Damage Protection - Protection of your PC from the unexpected.

Experience shows that a significant portion of devices may be damaged (and not covered under warranty) in the first three years. Lenovo's Accidental Damage Protection service covers accidents beyond the system warranty such as drops, spills, bumps and even electrical surges. Make sure your new device has maximum protection, avoid unplanned costs and get peace of mind.

Base Warranty - Included with the systems you purchase, default 1- or 3-year coverage window.

Warranty Extensions & Upgrades - Service and protection that's right for your circumstances.

- Pick Up & Return Courier
- Onsite Support
- Technician Installed Customer
- Replaceable Unit Service
- International Warranty Upgrade

Lenovo may not offer the products, services or features discussed in this document in all regions. Lenovo may withdraw an offering at any time. Information is subject to change without notice. Consult your local representative for information on offerings available in your area. Lenovo reserves the right to change specifications or other product information without notice. Lenovo is not responsible for photographic or typographical errors. Lenovo provides this publication "as is" without warranty of any kind, either express or implied, including the implied warranties of merchantability or fitness for a particular purpose.

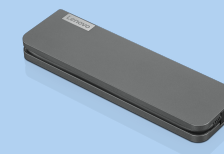
Recommended Accessories



ThinkPad USB-C Dock Gen 2

40AS0090US

- Lenovo understands that modern business depends on a wide variety of PC's and even brands to meet their business needs. To make this easier Lenovo USB-C dock is compatible with Lenovo notebooks as well as note...



Lenovo USB-C Mini Dock_US

40AU0065US

Expand Your Potential with An Universal Mini Dock; Lenovo understands that modern business depends on a wide variety of PC's and even brands to meet their business needs. To make this easier Lenovo USB-C Mini dock is ...

For a full list of accessories and services, please visit:
<https://smartfind.Lenovo.com>

Lenovo

PSREF
Product Specifications
Reference