

## PERFORMANCE

### Processor

Intel® Core™ i7-1255U, 10C (2P + 8E) / 12T, P-core 1.7 / 4.7GHz, E-core 1.2 / 3.5GHz, 12MB

### Graphics

NVIDIA® GeForce MX550 2GB GDDR6

### Chipset

Intel SoC Platform

### Memory

8GB Soldered DDR4-3200

### Memory Slots

One memory soldered to systemboard, one DDR4 SO-DIMM slot, dual-channel capable

### Max Memory<sup>[1]</sup>

Up to 40GB (8GB soldered + 32GB SO-DIMM) DDR4-3200

### Storage

512GB SSD M.2 2242 PCIe® 4.0x4 NVMe® Opal 2.0

### Storage Support<sup>[2][3]</sup>

Up to two drives, 2x M.2 SSD

- M.2 2242 SSD up to 1TB

### Storage Slot

Two M.2 slots

- One M.2 2242 PCIe 3.0 x4 slot
- One M.2 2242 PCIe 4.0 x4 slot

### Card Reader

No card reader

### Optical

None

### Audio Chip

High Definition (HD) Audio, Realtek® ALC3287 codec

### Speakers

Stereo speakers, 2W x2, Dolby® Audio™, audio by HARMAN

### Camera

FHD 1080p with Privacy Shutter

### Microphone

2x, Array

### Battery

Integrated 57Wh

### Power Adapter

65W USB-C® (3-pin)

## DESIGN

### Display<sup>[4]</sup>

14" FHD (1920x1080) IPS 300nits Anti-glare, 45% NTSC

### Touchscreen

None

### Keyboard

Non-backlit, French

### Case Color

Black

### Case Material

Aluminium (Top), Aluminium (Bottom)

### Dimensions (WxDxH)<sup>[5]</sup>

324 x 220.7 x 17.9 mm (12.76 x 8.69 x 0.7 inches)

### Weight<sup>[6]</sup>

Starting at 1.64 kg (3.62 lbs)

## SOFTWARE

### Operating System

None

### Bundled Software

None

## CONNECTIVITY

### Ethernet

100/1000M (RJ-45)

### WLAN + Bluetooth<sup>[7][8]</sup>

Wi-Fi® 6E, 11ax 2x2 + BT5.1

### WWAN

None

### SIM Card

None

### NFC

None

### Standard Ports

- 1x Ethernet (RJ-45)
- 1x HDMI® 2.1, up to 4K/60Hz
- 1x Headphone / microphone combo jack (3.5mm)
- 1x Thunderbolt™ 4 / USB4® 40Gbps (support data transfer, Power Delivery 3.0 and DisplayPort™ 1.4)
- 1x USB 2.0
- 1x USB 3.2 Gen 1 (Always On)

### Docking

Various docking solutions supported via Thunderbolt.

For more compatible docking solutions, please visit [Docking](#)

[for ThinkPad® E14 Gen 4 \(Intel\)](#)

### Monitor Cable

None

## SECURITY & PRIVACY

### Smart Card Reader

None

### Security Chip

Firmware TPM 2.0 Enabled

### Fingerprint Reader

Touch Style, Integrated in Power Button

### Physical Locks

Kensington® Security Slot™, 3 x 7 mm

### Other Security

Camera privacy shutter

## MANAGEABILITY

### System Management

Non-vPro®

## SERVICE

### Base Warranty

1-year, Courier or Carry-in

### Included Upgrade

None

## ACCESSORIES

### Bundled Accessories

None

## CERTIFICATIONS

### Green Certifications

- ErP Lot 3
- RoHS compliant
- TCO Certified 9.0

### Other Certifications

TÜV Rheinland® Low Blue Light (Software Solution)

### Mil-Spec Test

MIL-STD-810H military test passed

## MODEL

**TopSeller** : Yes **Announce Date** : 2022-05-17

**EAN / UPC / JAN** : 0196800732941 **End of Support** : 2028-12-17

Note:

<sup>[1]</sup> The max memory is based on the test results with current Lenovo memory offerings.

<sup>[2]</sup> The storage capacity supported is based on the test results with current Lenovo storage offerings.

<sup>[3]</sup> The system supports dual SSD via two M.2 slots, but Lenovo only offers one SSD configuration, another SSD slot for user self-extension.

<sup>[4]</sup> IPS (in-plane switching) technology may refer to IPS,.....

• Lenovo reserves the right to change specifications without notice.

To see more note information, please link to

<https://psref.lenovo.com/Detail/2007?M=21E300A5FE>

## Premier Support - A direct 24x7x365 line to our most elite technicians.



Advanced technical support, 24x7x365, in more than 100 markets



Technical Account Managers for proactive relationship and escalation management



Comprehensive hardware & OEM software support



Priority on service delivery and repair parts



Single point of contact for simplified end-to-end case management



Lenovo Service Connect Portal for customized reporting and product support

## Accidental Damage Protection - Protection of your PC from the unexpected.

Experience shows that a significant portion of devices may be damaged (and not covered under warranty) in the first three years. Lenovo's Accidental Damage Protection service covers accidents beyond the system warranty such as drops, spills, bumps and even electrical surges. Make sure your new device has maximum protection, avoid unplanned costs and get peace of mind.

## Base Warranty - Included with the systems you purchase, default 1- or 3-year coverage window.

## Warranty Extensions & Upgrades - Service and protection that's right for your circumstances.

- Pick Up & Return Courier
- Onsite Support
- Technician Installed Customer
- Replaceable Unit Service
- International Warranty Upgrade

Lenovo may not offer the products, services or features discussed in this document in all regions. Lenovo may withdraw an offering at any time. Information is subject to change without notice. Consult your local representative for information on offerings available in your area. Lenovo reserves the right to change specifications or other product information without notice. Lenovo is not responsible for photographic or typographical errors. Lenovo provides this publication "as is" without warranty of any kind, either express or implied, including the implied warranties of merchantability or fitness for a particular purpose.

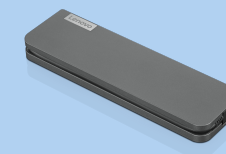
## Recommended Accessories



### ThinkPad USB-C Dock Gen 2

40AS0090US

- Lenovo understands that modern business depends on a wide variety of PC's and even brands to meet their business needs. To make this easier Lenovo USB-C dock is compatible with Lenovo notebooks as well as note...



### Lenovo USB-C Mini Dock\_US

40AU0065US

Expand Your Potential with An Universal Mini Dock; Lenovo understands that modern business depends on a wide variety of PC's and even brands to meet their business needs. To make this easier Lenovo USB-C Mini dock is ...

For a full list of accessories and services, please visit:  
<https://smartfind.Lenovo.com>

**Lenovo**

**PSREF**  
Product Specifications  
Reference